

Evaluation is not Hard Science

Anita Low-Lim

TOUCH Community Services

Chief Transformation Officer



Confidential

Do not circulate without written permission from TOUCH Community Services.

How We Started ...

Collaboration with key academic partners

Development of an Adolescent Pathological Video Gaming Treatment Model in Singapore

A REPORT TO TOUCH COMMUNITY SERVICES LEADERSHIP

Principal Investigator:
Dr Timothy SIM, Assistant Professor
Department of Applied Social Sciences
The Hong Kong Polytechnic University
28 March, 2012
9.30am – 11.30am

Development of an Adolescent Pathological Video Gaming Treatment Model in Singapore (2012)

First formal evaluation project with
academics

Significant Growth Experiences ...

Building Capability within TOUCH and in the community

Internal Workshops for TOUCH Staff

2018

2019

2020 and Beyond

External Workshops for Others

Significant Growth Experiences ...

Inculcating Use of Data in Programme's Life Cycle



Low-income families struggled to stay digitally included. The challenge they face includes **a lack of access to resources** (both hardware and capabilities to navigate it) and **strong support networks** in general.

With **digital inadequacy** as a major stress point for vulnerable families, TOUCH created **Digitally Ready Families** (DRF) with support from long-time partner Facebook to holistically address the digital gap by providing devices and empowering low-income families with skills to navigate the digital space in today's new normal.



Significant Growth Experiences ...

Inculcating Use of Data in Programme's Life Cycle

Programme helps low-income families be digitally ready



Goh Yan Han

PUBLISHED 29 APR 2021, 5:00 AM SGT



With two teenage daughters who were always glued to their digital devices, Mr Mohamad Roslan Palil, 54, struggled daily to ensure they did their homework on time and got enough sleep.

When he took part in a pilot programme by Touch Community Services, Mr Roslan learnt how to use digital platforms and cyber-wellness tips and was able to better understand and communicate with his daughters - and ultimately get them to adopt better habits when using their devices.

As part of the Digitally Ready Families programme - aimed at teaching digital skills to low-income families - Mr Roslan and his wife learnt parenting strategies and how to have honest conversations with the teens - aged 13 and 14 - about their use of electronic devices. The couple also have a six-year-old son.

With the skills they have learnt, the family is now closer, and the daughters have become more disciplined in their device use and lead better and healthier lifestyles, said Mr Roslan, who is looking for a job.



Significant Growth Experiences ...

Inculcating Use of Data in Programme's Life Cycle



Identify and Design



Implement, Monitor and Evaluate



Stabilise and Replicate (Monitor)



Confidential

Do not circulate without written permission from TOUCH Community Services.

Significant Growth Experiences ...

Evaluating and learning with our partners

REAIM Framework

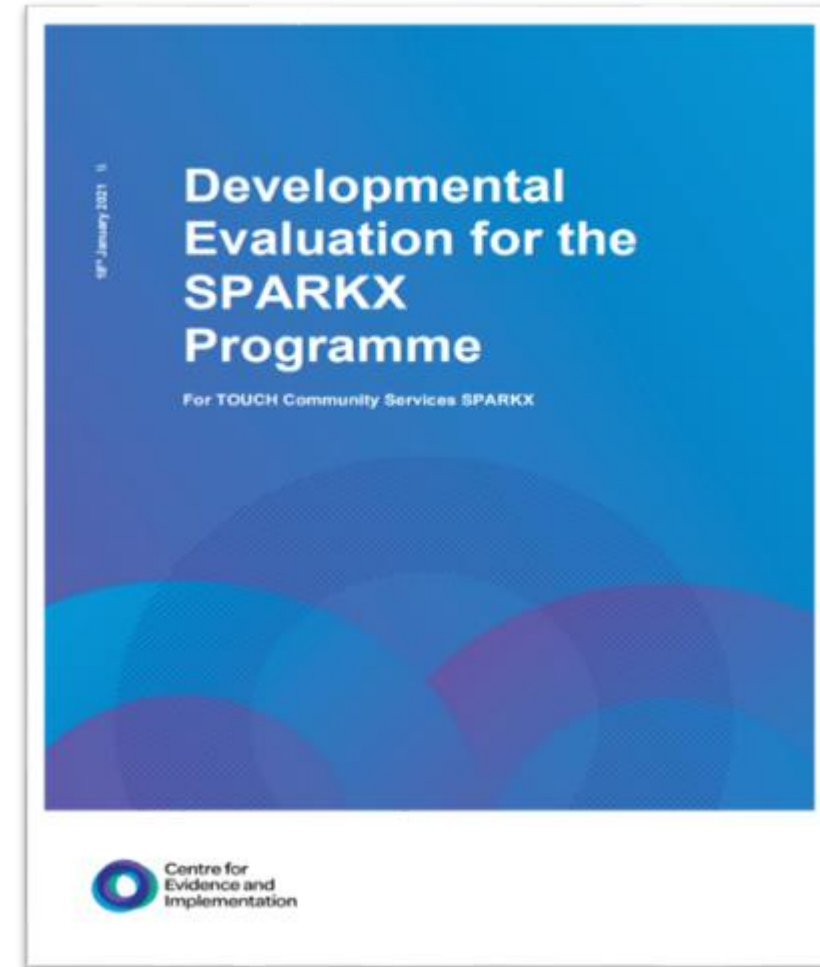
Reach

Effectiveness

Adoption

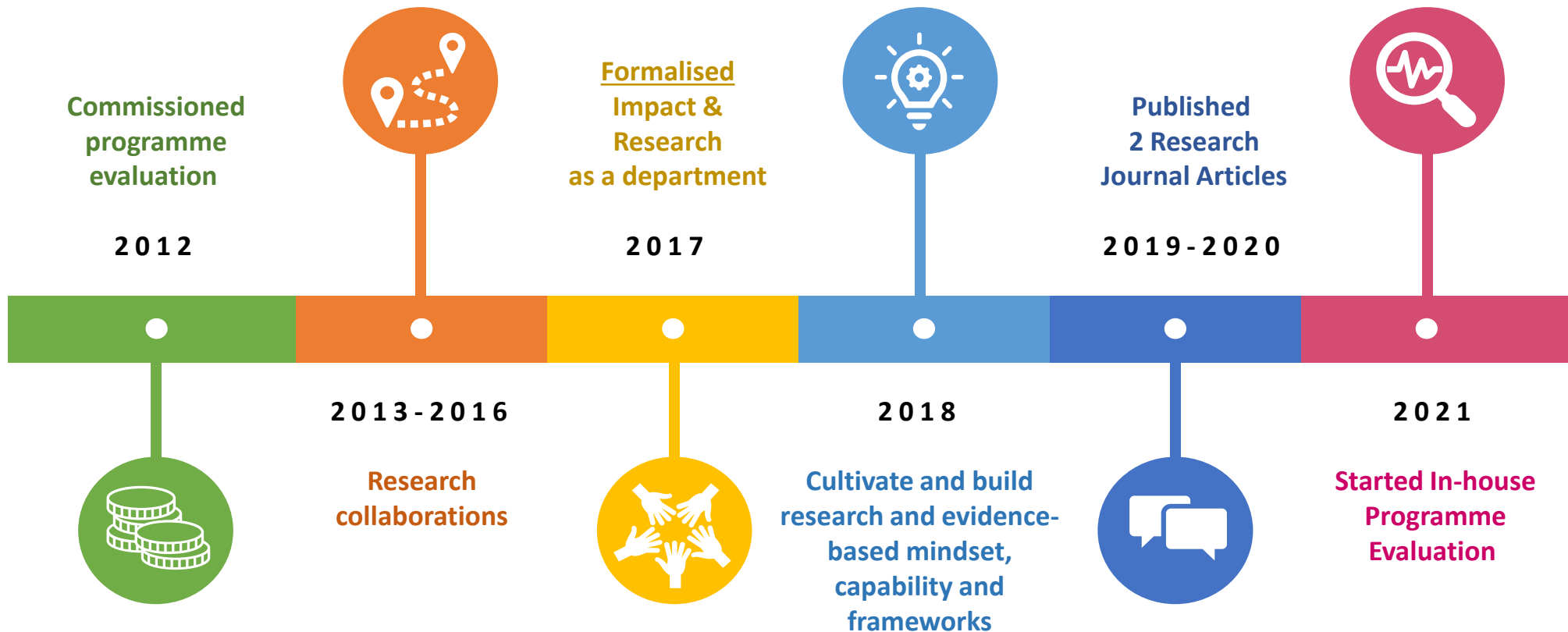
Implementation

Maintenance



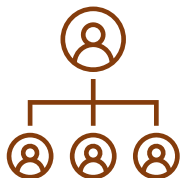
Our Significant Milestones ...

Growth through learning from others, helping others learn



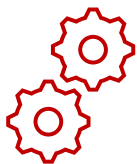
What worked for us ...

INTERNAL



Strong Leadership Support

- Board & Management



Build Systems and Processes

- Financial resources
- Capability building



Hiring Suitable Staff

- Analytical mind and aptitude to learn
- Good communicator: Bite-size and applicable
 - Relational

EXTERNAL



Learn through collaborations

- Learn from research partners



Landscape: Increasing resources available for social care sector

A hand is shown placing a smooth, dark stone onto a stack of four other smooth stones on a pebbly beach. The background is a blurred view of the ocean waves. The text "One by One" is overlaid in white, with a white wavy line underneath it.

One by One

Confidential

Do not circulate without written permission from TOUCH Community Services.